

MOREHOUSE SCHOOL OF MEDICINE

2020 CAMPUS MASTER PLAN



MSM 2020 MASTER PLAN

T A B L E O F C O N T E N T S

0 1 EXECUTIVE SUMMARY

- 1.1 GOALS AND OBJECTIVES
- 1.2 PLAN ELEMENTS

0 2 GENERAL

- 2.1 MOREHOUSE SCHOOL OF MEDICINE CAMPUS LOCATIONS
- 2.2 2010 WESTVIEW CAMPUS SITE PLAN

0 3 MASTER PLAN | CAMPUS ANALYSIS

- 3.1 2010 CAMPUS OVERVIEW
- 3.2 2010 SITE ANALYSIS DIAGRAMS

.01 SITEITIT

Executive

EXECUTIVE SUMMARY

GOALS AND OBJECTIVES

Morehouse School of Medicine (MSM), with the leadership of President John E. Maupin, Jr. and his senior staff, and the guidance and advice of the Board of Trustees undertook a serious planning initiative in 2008-2010. Beginning with the development of *Strategic Plan 2009-2014*, the College's five year strategic plan covering the period from July 2009 to July 2014, and extending to the development of this *Comprehensive Plan*, the School is positioning itself for a visionary period of sustained growth and broad support ambitious in aspiration and scope.

Additionally, to help deter the shortage of physicians in Georgia, MSM has developed plans to increase its class size to 75 by 2020. Implementation of this expansion plan (which shall add 300 students over a 4 year period) shall necessitate growth in the number of teaching faculty, both basic science and clinical, to insure the delivery of a high quality medical education.

Miss S a e m e

*Miss S a e m e
Miss S a e m e
Miss S a e m e
Miss S a e m e
Miss S a e m e*

Vi is

01.1

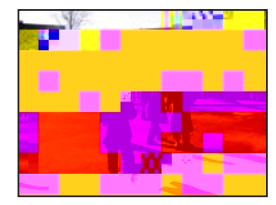
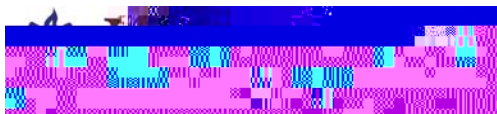
Pl a i P ce ss

The team worked closely with MSM's leadership and the Campus Planning Committee guiding them through a planning process with four-phases:

1. Information Gathering / Appreciative Inquiry – to analyze and assess existing and future program and facility issues

P L A N E L E M E N T S

T



02.2

